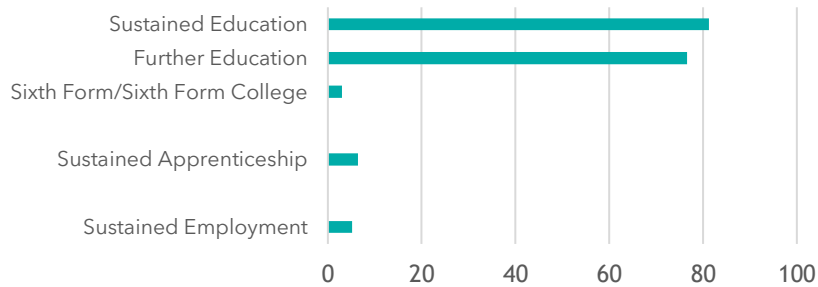


Key Stage 4 Destination Data (%)



Demographics

Under 18 yrs: 17.2%	Male: 49.7%
18- 24 yrs: 17.5%	Female: 50.3%
25-64 yrs: 49.4%	White: 92.8%
65+ yrs: 15.9%	BAME: 7.2%

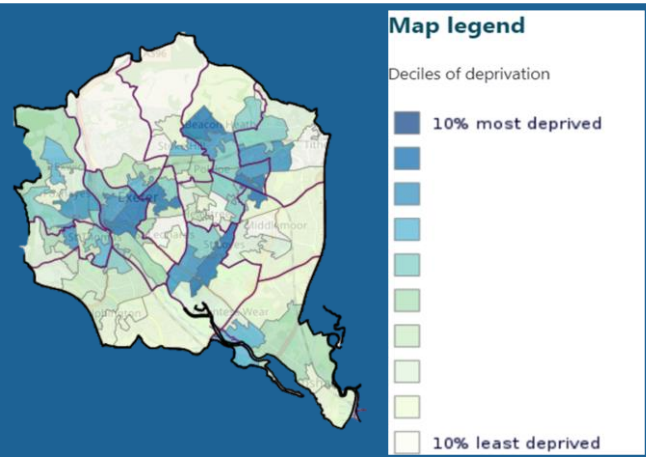
What this map shows

This map of Exeter is split into Lower Layer Super Output Areas (LSOAs). LSOAs have an average population of around 1,700.

The colours indicate the **Employment Deprivation** decile (against all LSOAs in England in 2019) that the working-age population falls into. Employment deprivation is measured as those who are involuntarily excluded from the labour market (i.e. people who would like to work but are unable to do so due to unemployment, sickness or disability, or caring responsibilities).

More deprived Less deprived

Relative level of deprivation



Key Employers...

- Royal Devon and Exeter NHS NHS Foundation Trust
- NFU
- Michelmores
- UNIVERSITY OF EXETER
- Devon County Council
- Gregory Delivering winners
- Met Office
- exeter college
- Santander
- Newcross HEALTHCARE
- Pennon

